

Panasonic

ideas for life

Network Camera
 Indoor use **BB-HCM715**
 Outdoor use **BB-HCM735**
 *AC adaptor is sold separately.

Viewnetcam.com
 Access www.viewnetcam.com for registration information.



* This logo mark is issued by the IPv6 Ready Logo Program Committee, an IPv6 promotion group established mainly by the IPv6 Forum.

See from Anywhere with a Variety of Monitoring Environments



BB-HCM735

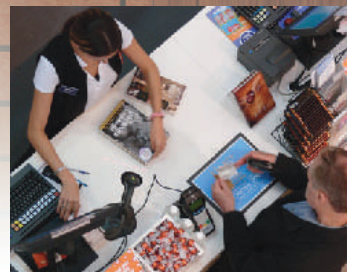
See There
 When You Can't Be There™



passageway



Garage



Stores



Entrances

Zero Distance Management

Zero Distance Management is a new business style made possible by Panasonic network cameras. It allows safe, smooth, economical business management that is totally free from conventional distance and time limitations.

System Diagram

The PoE function supplies power through an Ethernet cable*. DDNS service and UPnP compatibility make it easy for anybody to set up and use the system over the Internet.



*An optional AC adaptor can also be used.

Achieving Zero Distance Management with a Variety of Functions



Capture

Megapixel Cameras

Mega pixel and higher image quality

Resolution has been improved to 1280 x 960 pixels, enabling rendering of finer detail. VGA (Video Graphics Array) quality has also been improved.

Megapixel image quality comparison of new and existing models



2x2 Pixel Binning

2 x 2 pixel binning treats four adjacent pixels as one virtual pixel, thereby increasing camera sensitivity, and improving viewability in low light conditions

4-pixel summation function

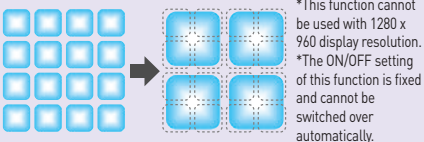


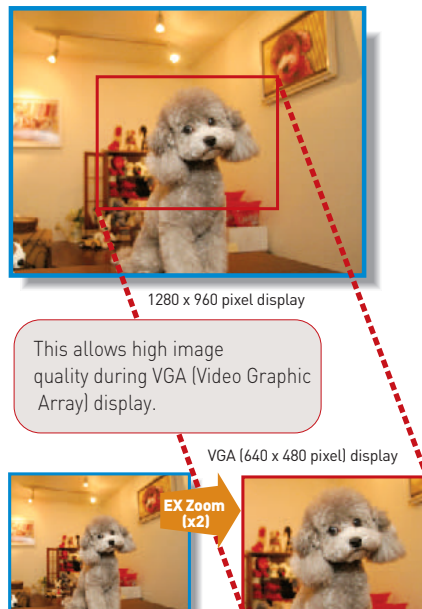
Image quality comparison



Control

EX Zoom

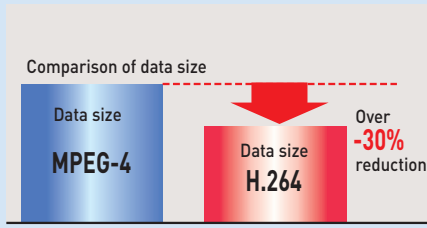
Although not equipped with optical zoom, these models have an EX Zoom [EX is supposed to stand for "excellence"] function. This allows high image quality during VGA (Video Graphic Array) display with the use of 1280 x 960 pixel image.



Connect

Data transmission / H.264 adopted

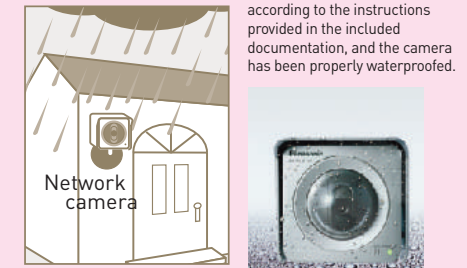
The adoption of H.264/ACV has enabled reduction of data volume by more than 30% compared to MPEG-4 when transmitting data of the same image quality.



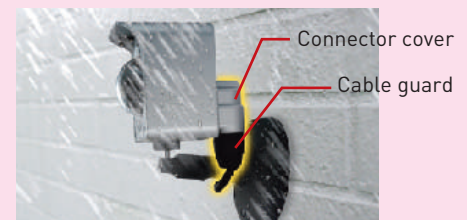
Installation

Enhanced waterproof performance

BB-HCM735 can be directly installed onto any outdoor walls. Wider choice of outdoor installation location (formerly limited to space under the eaves, etc.) expands its scope of application, catering better to users' needs.

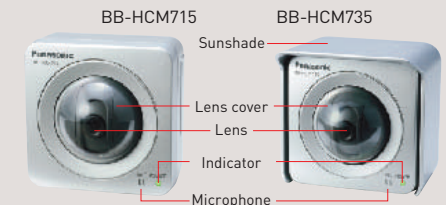


Connector cover and cable guard provide protection against wind and rain to ensure uninterrupted signal transfer.

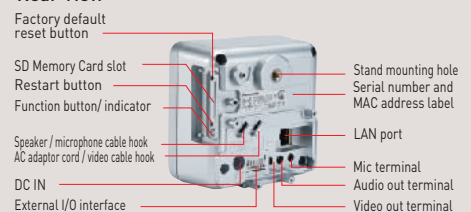


Part Names

Front View



Rear View



Specifications [BB-HCM715/BB-HCM735]

Server		Camera		General	
Image Compression	JPEG [3 levels], MPEG-4, H.264	Sensor Type	1/3 inch MOS sensor, approx. 1,300,000 pixels MAICOVICON	Operating Temperature	BB-HCM715: Operation: +0 °C (+32 °F) to +40 °C (+104 °F) Storage: +0 °C (+32 °F) to +50 °C (+122 °F) BB-HCM735: Operation: -20 °C (-4 °F) to +50 °C (+122 °F) Storage: -25 °C (-13 °F) to +60 °C (+140 °F)
Image Resolution	1280 x 960, 640 x 480, 320 x 240 (default), 192 x 144**	Lens Focal Point	Fixed (focal range: 0.5 m to infinity)	Operating Humidity	BB-HCM715: Operation: 20% - 80% (no condensation) Storage: 20% - 90% (no condensation) BB-HCM735: Operation: 20% - 90% (no condensation) Storage: 20% - 90% (no condensation)
Image Quality (JPEG Only)	JPEG (favor clarity, standard, favor motion)	Aperture (F No.)	F2.4	Dimension [H x W x D]	100 x 100 x 74 mm (3 15/16 inches x 3 15/16 inches x 2 15/16 inches)
Frame Rate**	Max. 30 frames/second (1280 x 960*, 640 x 480, 320 x 240, 192 x 144)	White Balance	Auto/manual/hold	Weight (Only the Unit)	BB-HCM715: 335 g (0.74 lb.) BB-HCM735: 340 g (0.75 lb.)
Security	User ID/password/SSL	Exposure	Auto	Power Consumption	When Using an Optional AC Adaptor (Model No. BB-HCA7A) About 3.3 W (7.5 W during pan / tilt scan) When Using an Optional AC Adaptor (Model No. BB-HCA7CE / BB-HCA7E) About 3.3 W (7.5 W during pan/tilt scan) When Using POE About 3.3 W (7.5 W during pan/tilt scan)
Supported Protocols	IPV4 / IPv6 Dual-Stack IPV4: TCP, UDP, IP, HTTP, FTP, SMTP, DHCP, DNS, ARP, ICMP, POP3, NTP, UPnP**, SMTP Authentication, RTP, RTSP, RTCP IPV6: TCP, UDP, IP, HTTP, FTP, SMTP, DNS, ICMPv6, POP3, NDP, NTP, RTP, RTSP, RTCP	Illuminance	At 640 x 480: 0.3 to 100,000 lux (in Color Night View mode: 0.04 to 100,000 lux) At 1280 x 960: 0.6 to 100,000 lux (in Color Night View mode: 0.07 to 100,000 lux) Screen brightness, white balance: automatic/manual setting	Power Supply	Optional AC adaptor (Model No. BB-HCA7A) Input 100-120 V AC, 50/60 Hz Output 12 V DC, 750 mA Optional AC adaptor (Model No. BB-HCA7CE/BB-HCA7E) Input 100-240 V AC, 50/60 Hz Output 12 V DC, 750 mA PoE : PoE standard IEEE802.3af-2003
User Access Limit	Max. 30 simultaneous accesses (Max. 8 accesses while accessing HTTPS site in HTTPS communication; max 3 accesses in H.264/MPEG-4 mode)	Audio			
Buffered Image	About 1290 frames (320 x 240, standard image quality) with time display (when SD memory card is not inserted)	Audio Communication	2-Way half duplex		
Image Transfer Method	SMTP**, FTP, HTTP	Audio Play Method	Play with ActiveX		
Image Buffer/Transfer Triggers	Alarm, timer, motion detection	Audio Encoding Method	Encoding with ActiveX		
Camera		Audio Compression	H.264 : MPEG-2 AAC (AAC-LC) 64Kbps MPEG-4 : JPEG-ADPCM 32 kbps		
Zoom	6x zoom (2x EX zoom, 3x digital zoom)	Audio Bandwidth	300 Hz - 3.4 kHz		
Viewing Angle	Horizontal: 69° (total 174°), Vertical: 51° (total 105°) Pan : -52° up to +52°, Tilt : -45° up to +8°	Audio Input	Built-in microphone, external microphone input terminal		
Revolving Speed	Pan: max. 80°/sec, tilt: max. 80°/sec	Audio Output	Audio line output terminal for external speaker		
		Terminal			
		Network Interface	Ethernet (10Base-T / 100Base-TX)		
		External I/O Connector	Input: 2, output: 1		
		Video Output**	Analog composite (NTSC/PAL)		
		Audio Output**	3.5 mm stereo mini jack (output is mono)		
		External Microphone Input	3.5 mm mini jack		
		SD Memory Card Slot	Full size		

**1 except H.264
**2 Frame rate may decrease in the following situations. - When buffering images - When using color night view mode - When Analog Video Output is set to [Enable] - When many users are viewing camera images
**3 30 frames/second is not possible when viewing MJPEG images at 1280 x 960 resolution.
**4 The camera supports PoP Before SMTP Authentication and SMTP Authentication, PLAIN, LOGIN, and CRAM-MD5 SMTP Authentication are supported. SSL supports SMTP over SSL. STARTTLS is not supported.
**5 Use only the included Audio/Video Cable when connecting an external microphone, speaker or TV.